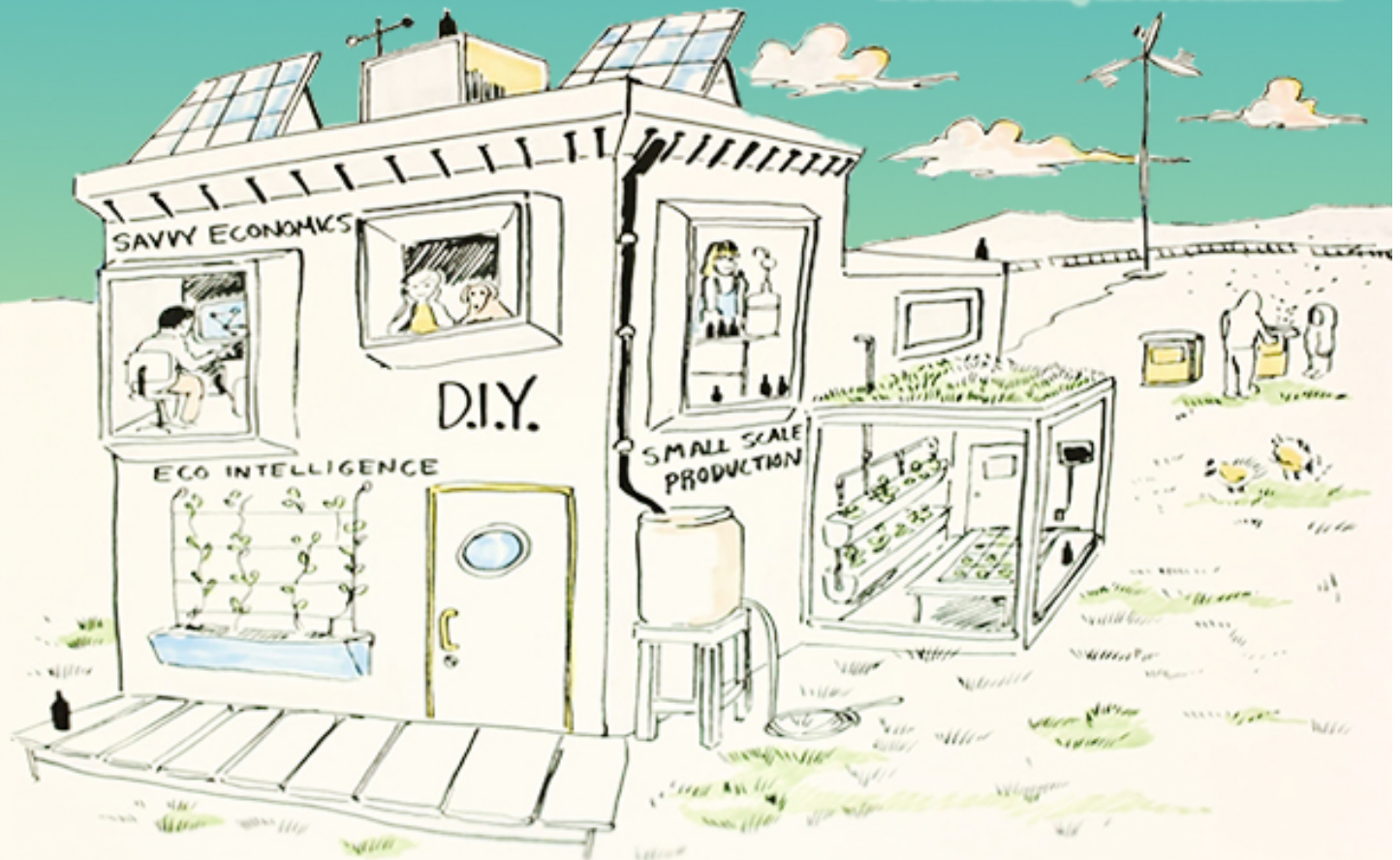


SUMMER INSTITUTE IN NEW ECONOMICS

Wingspread Retreat Center Wind Point, WI August 12-18, 2013

www.bc.edu/neweconomics



Labor & Consumer Cultures Gar Alperovitz **New Urban Economies** Michel Bauwens
Democratization of Wealth Prasannan Parthasarathi **Complex Systems** Joel Rogers
Ecological Alternatives Juliet Schor **P2P Economies** Gill Seyfang **Grassroots Innovations
& Sustainable Transitions** **Labor & Consumer Cultures** Gar Alperovitz **New Urban
Economies** Michel Bauwens **Democratization of Wealth** Prasannan Parthasarathi
Complex Systems Joel Rogers **Ecological Alternatives** Juliet Schor **P2P Economies** Gill
Seyfang **Grassroots Innovations & Sustainable Transitions** **Labor & Consumer Cultures**
Gar Alperovitz **New Urban Economies** Michel Bauwens **Democratization of Wealth**
Prasannan Parthasarathi **Complex Systems** Joel Rogers **Ecological Alternatives** Juliet
Schor **P2P Economies** Gill Seyfang **Grassroots Innovations & Sustainable Transitions**

2nd Annual Summer Institute in New Economics

Wingspread Retreat Center // August 12-18, 2013

Dire ecological news and the failures of the global economy are fuelling interest in a “new economics” grounded in principles of ecological sustainability, the democratization of wealth, community empowerment and social and digital connection. Following the success of last year’s first annual Boston College Summer Institute in New Economics, we will be holding another session from August 12-18, 2013. If you are a PhD student in the social sciences, you are invited to apply.

We will bring together a group of distinguished faculty who are pursuing research and practice in this emerging field. Faculty include Juliet Schor (Boston College), Gar Alperovitz (University of Maryland), Joel Rogers (University of Wisconsin), Michel Bauwens (P2P Foundation and University of Amsterdam), and Gill Seyfang (University of East Anglia). Practitioners working on new economy projects will join us for workshops. Together with a dynamic group of students, we will meet for an intensive program of classes, workshops and participatory sessions. Graduate students attending the Institute can expect to leave with a solid grounding in the latest research and theory, and as part of a network of faculty and other graduate students.

This year’s institute will be held at the Johnson Foundation’s Wingspread Retreat Center, a historic Frank Lloyd Wright designed home at Wind Point, Wisconsin. Wingspread is an exceptional facility at the shores of Lake Michigan that fosters productive conversations, creativity and community. It is located on 32 acres of land and is ideal for hiking, biking and swimming. Wingspread offers superb dining and accommodations. If you are interested in attending this year’s Institute, please be in touch with us at neueconomics@bc.edu. The cost of the Institute is \$500 and scholarships are available for participants.

Faculty

Gar Alperovitz
Michel Bauwens
Prasannan Parthasarathi
Joel Rogers
Juliet Schor
Gill Seyfang

Topics

Labor & Consumer Cultures
New Urban Economies
Democratization of Wealth
Complex Systems
Ecological Alternatives
P2P Economies
Grassroots Innovations &
Sustainable Transitions

Application Information

Dates: Applications open for submission April 1st, rolling admissions

Cost: \$500 includes housing and meals (does not include travel). Ample scholarship funding is available. *Do not let financial considerations discourage applications.*

The Institute is open to any graduate student in any field, including but not limited to Sociology, Environmental Studies, Economics, and Anthropology. Preference will be given to PhD students, but the program is open to MA, MS, and MBA students.

Applications should include a statement of purpose describing research interests and demonstrating a commitment to the field of new economy (broadly defined), transcript and a letter of recommendation.

Please email neueconomics@bc.edu with questions and to let us know you are interested.